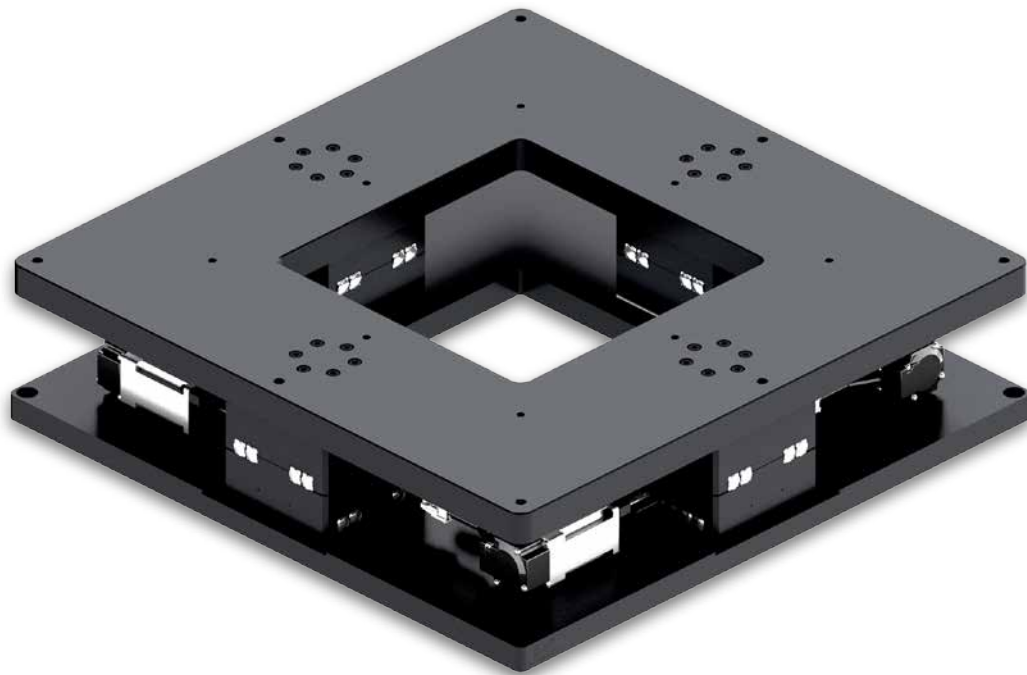




Precision Positioning Tables/XXY Series

Peristaltic Cross Rail, High-precision
Cross Roller Bearing Support, Stable Performance



XXY Precision Positioning Table is widely used in optical measuring instruments, CCD visual bit instruments, LCD panel detection, semiconductor processing, laser cutting and drilling flat coating machines, numerical control equipment, grinding equipment, wafer alignment equipment, exposure equipment, composite machines, etc.

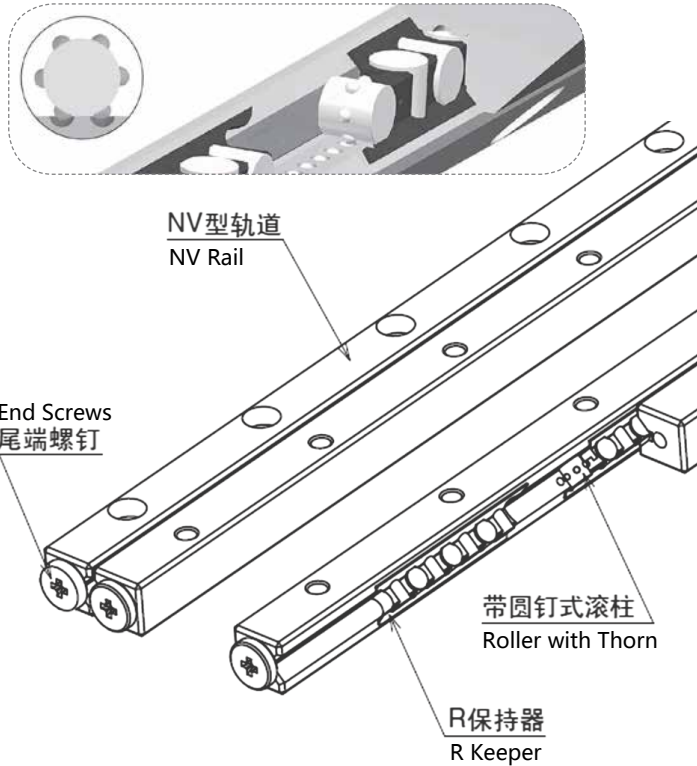
● Thin Design Saves Space

The three-axes co-graphic design greatly reduces the overall height and the overall platform is lighter and thinner, saving more space

● High Accuracy. High Rigidity. High Stability

Peristaltic cross rail, high-precision cross roller bearing support and stable performance make a precision positioning table of G+ with high accuracy, high rigidity and high stability

Anti-peristaltic cross-rail system



G+ XXY series precision positioning table, leading the use of an anti-peristaltic cross-rail system

The cross ball guide rail is composed of a precision grinding track and a built-in retainer with a nail roller

Because the retainer has a screw roller, the track and the rolling body won't slip, so it greatly improves the stability performance of the alignment platform, especially in the process of high-speed operation and the rigid performance of the structure is better

Accessories of XXY precision positioning tables

Strict quality checks have been carried out incoming materials, assembly, testing and other links to ensure the accuracy, stability and service life of the platform of GIGA'S XXY precision positioning tables



尼得科/Nidec
Screw -C5 Grinding



锅屋百迪/NBK
Coupling - rigid Coupling



易格斯/Igus
Lines- ultra-flexible shield



恩碧/NB
Rail - Anti-peristaltic



克鲁勃/Klueber
Lubricating Oil, Low-dust Synthetic Fat



吉嘉/G+
Cross Roller Bearing-IP4 / Rail- Anti-peristaltic



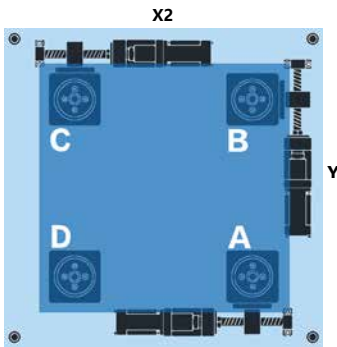
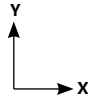
鸣志/Moons'
Motor- Two-phase Step Motor / Drive - pulse lines



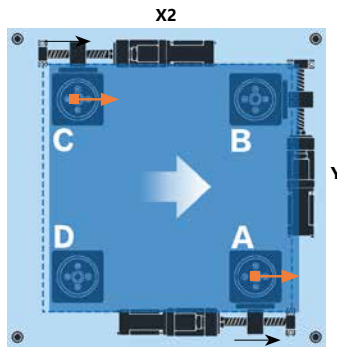
日本信浓/Shinano
Kenshi Motor - Two-phase Step Motor

■ XXY Moving Way

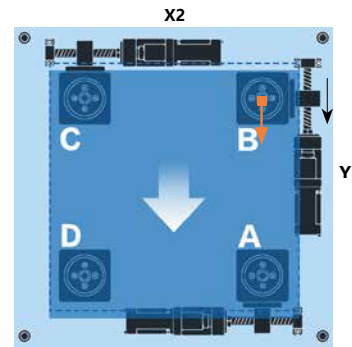
*Active shaft: A, B, C; Positive shaft: D



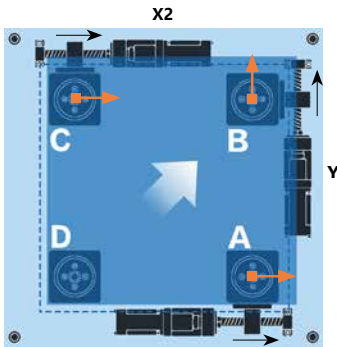
01 Initial Position
X1, X2, Y stay in original



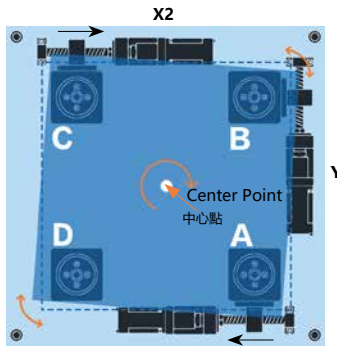
02 X Move Direction
X1, X2 working, Y stay



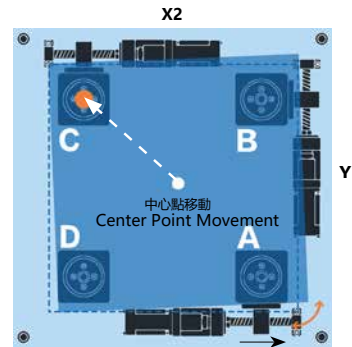
03 Y Move Direction
X1, X2 stay, Y working



04 Random Oblique Move
X1, X2, Y working according to the program algorithm

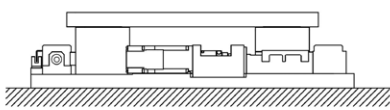


05 Rotation With The Center of Platform
X1, X2, Y working according to the program algorithm

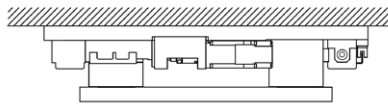


06 Rotation With Any Point As Center
X1, X2, Y working according to the program algorithm

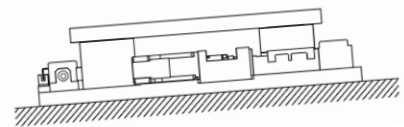
■ Installation and Precaution



Horizontal Installation ✓

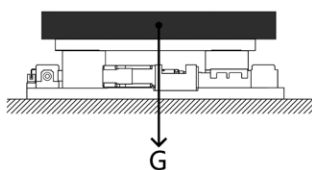


Invert Installation ✓

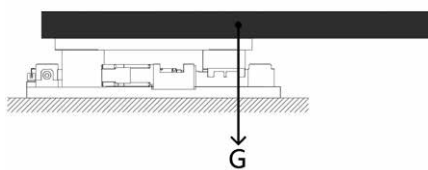


Tilting Installation ✗

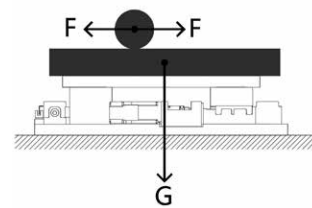
■ Load Installation and Precaution



* Platform stress needs to be evenly distributed during load installation



* The load is centered on the platform side



* Increase load during operation

* The load is forced on the side of the platform and the load increased during operation. Please consult your local dealer

■ XXY160 Series

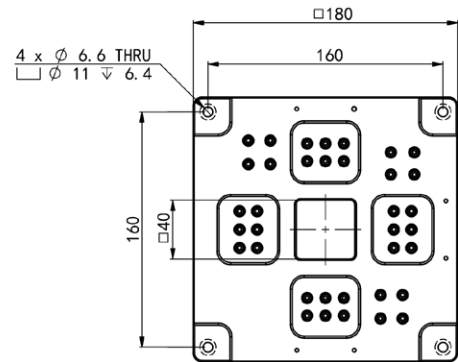
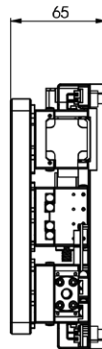
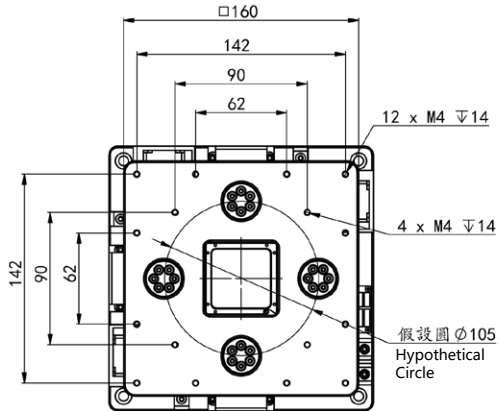
| | | | | | | | | | | |
|------------|------------|----------|------------|------------|----------|--------------------|---------------------------------|----------|----------|------------|
| XXY | 160 | - | 5 | - | M | C | 4 | 0 | - | B28 |
| Series | Size | Stroke | Drive Type | Support | Rails | Brakes | Motor | | | |
| 3 Axes | | ±5mm | Mid-drive | Cross Type | 4: 4 pcs | 0: None 1: 1 pc | B28: Dedicated 28 Stepper Motor | | | |

■ XXY160 Technical Parameters

| Item | Model | XXY160-5-MC40-B28 XXY160-5-MC41-B28 |
|------------------------|-------|--|
| Table Size | mm | 160×160 |
| Base Size | mm | 180×180 |
| Height | mm | 65 |
| Stroke | mm | ±5 |
| Repeatability | µm | 2 |
| Movement | ° | ±5 |
| Flatness | mm | ±0.02 |
| Motor | | Dedicated 28 Stepper Motor |
| Screw Lead | mm | 1 |
| Suggested Dynamic Load | kg | 30 |
| Static Load | kg | 120 |
| Surface Treatment | | Black Anodized |
| Weight | kg | 3 |

- XXY
- GXYR
- GX
- GZ
- GTZ
- GXY
- GR
- GYH
- GSH
- GSR
- GSHR
- GSA
- GSN
- GSB
- GSG
- Parameter
- GSZ
- GMR
- GMC
- GMA
- GML

■ XXY160-5-MC40-B28
 XXY160-5-MC41-B28



| |
|-----------|
| XXY |
| GXYR |
| GX |
| GZ |
| GTZ |
| GXY |
| GR |
| GYH |
| GSH |
| GSR |
| GSHR |
| GSA |
| GSN |
| GSB |
| GSG |
| Parameter |
| GSZ |
| GMR |
| GMC |
| GMA |
| GML |

■ XXY200 Series

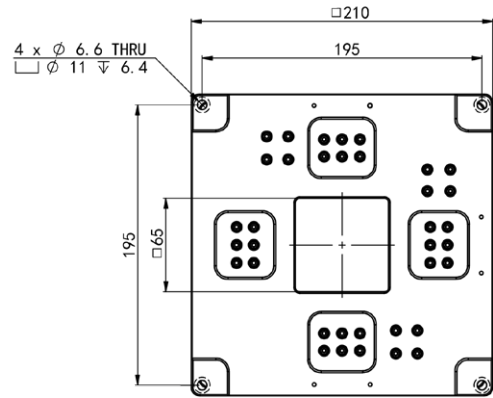
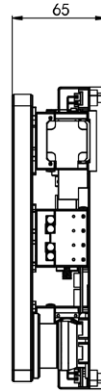
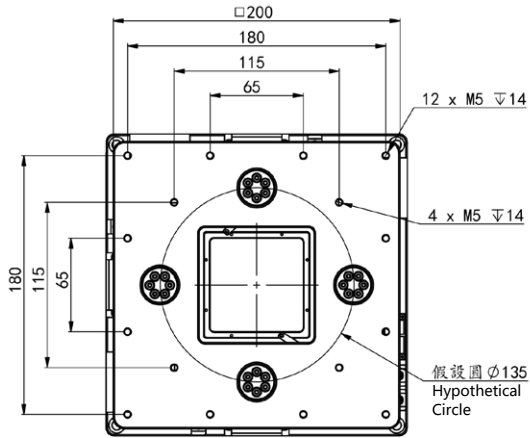
| XXY | 200 | - 5 | - M | C | 4 | 0 | - B28 |
|------------|------------|------------|------------|------------|----------|--------------------|---|
| Series | Size | Stroke | Drive Type | Support | Rails | Brakes | Motor |
| 3 Axes | | ±5mm | Mid-drive | Cross Type | 4: 4 pcs | 0: None 1: 1 pc | B28: Dedicated 28 Stepper Motor S5ZC1: 50W Servo Motor Connector PCD45-Φ30-Φ8-M3 S5ZC2: 50W Servo Motor Connector PCD46-Φ30-Φ8-M4 |

■ XXY200 Technical Parameters

| Item | Model | XXY200-5-MC40-B28 XXY200-5-MC41-B28 | | XXY200-5-MC40-S5ZC1 XXY200-5-MC40-S5ZC2 XXY200-5-MC41-S5ZC1 XXY200-5-MC41-S5ZC2 | |
|------------------------|-------|--|----|--|--|
| | | Table Size | mm | 200×200 | |
| Base Size | mm | 210×210 | | | |
| Height | mm | 65 | | | |
| Stroke | mm | ±5 | | | |
| Repeatability | μm | 2 | | | |
| Movement | ° | ±4 | | | |
| Flatness | mm | ±0.02 | | | |
| Motor | | Dedicated 28 Stepper Motor | | 50W Servo Motor Connector | |
| Screw Lead | mm | 1 | | | |
| Suggested Dynamic Load | kg | 30 | | | |
| Static Load | kg | 120 | | | |
| Surface Treatment | | Black Anodized | | | |
| Weight | kg | 4 | | | |

- XXY
- GXYR
- GX
- GZ
- GTZ
- GXY
- GR
- GYH
- GSH
- GSR
- GSHR
- GSA
- GSN
- GSB
- GSG
- Parameter
- GSZ
- GMR
- GMC
- GMA
- GML

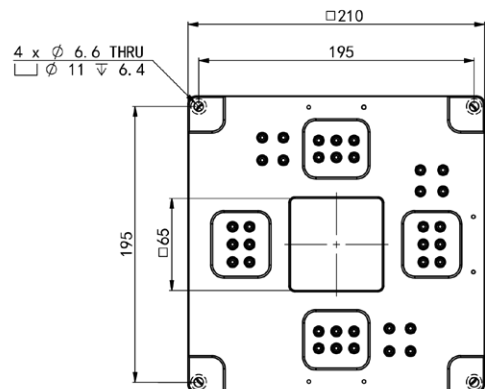
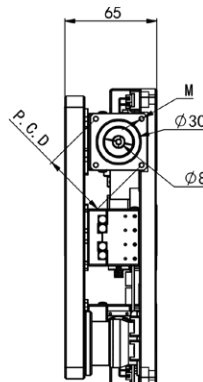
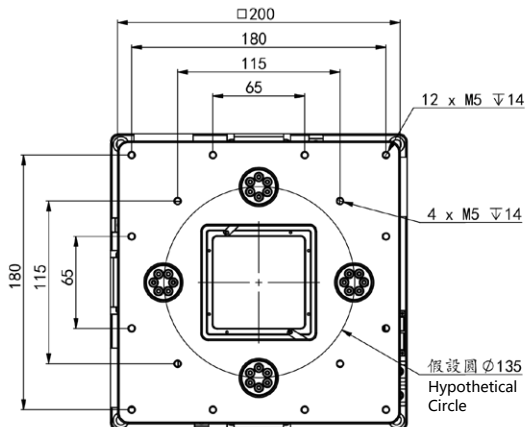
■ XXY200-5-MC40-B28
 XXY200-5-MC41-B28



■ XXY200-5-MC40-S5ZC1
 XXY200-5-MC40-S5ZC2
 XXY200-5-MC41-S5ZC1
 XXY200-5-MC41-S5ZC2



S5ZC1: 50W Servo Motor Connector
 PCD45-Φ30-Φ8-M3
 S5ZC2: 50W Servo Motor Connector
 PCD46-Φ30-Φ8-M4



■ XXY250 Series

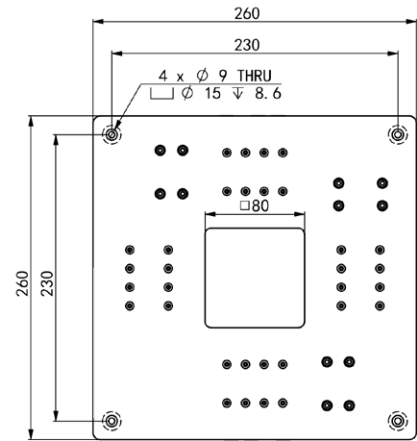
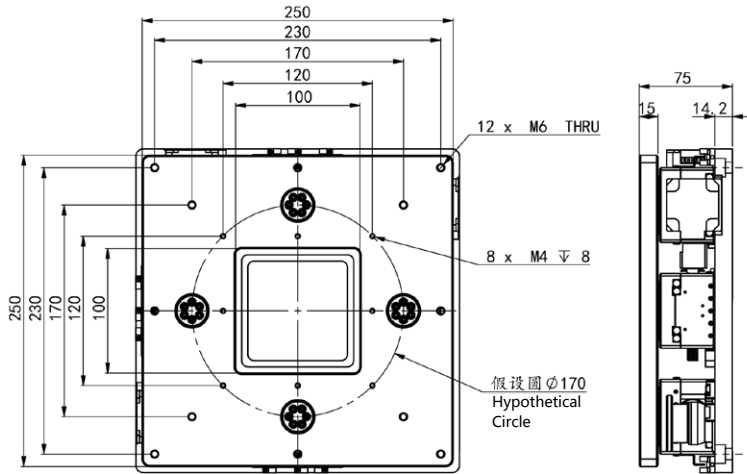
| XXY | 250 | - 7 - | M | C | 4 | 0 | - B42 |
|------------|------------|--------------|------------|------------|----------|--------------------|---|
| Series | Size | Stroke | Drive Type | Support | Rails | Brakes | Motor |
| 3 Axes | | ±7mm | Mid-drive | Cross Type | 4: 4 pcs | 0: None 1: 1 pc | B42: Dedicated 42 Stepper Motor S10C1: 100W Servo Motor Connector PCD45-Φ30-Φ8-M3 S10C2: 100W Servo Motor Connector PCD46-Φ30-Φ8-M4 |

■ XXY250 Technical Parameters

| Item | Model | XXY250-7-MC40-B42 XXY250-7-MC41-B42 | |
|------------------------|-------|--|----------------------------|
| | | XXY250-7-MC40-S10C1 XXY250-7-MC40-S10C2 XXY250-7-MC41-S10C1 XXY250-7-MC41-S10C2 | |
| Table Size | mm | 250×250 | |
| Base Size | mm | 260×260 | |
| Height | mm | 75 | |
| Stroke | mm | ±7 | |
| Repeatability | μm | 2 | |
| Movement | ° | ±4.5 | |
| Flatness | mm | ±0.02 | |
| Motor | | Dedicated 42 Stepper Motor | 100W Servo Motor Connector |
| Screw Lead | mm | 2 | |
| Suggested Dynamic Load | kg | 80 | |
| Static Load | kg | 120 | |
| Surface Treatment | | Black Anodized | |
| Weight | kg | 7 | |

| |
|-----------|
| XXY |
| GXYR |
| GX |
| GZ |
| GTZ |
| GXY |
| GR |
| GYH |
| GSH |
| GSR |
| GSHR |
| GSA |
| GSN |
| GSB |
| GSG |
| Parameter |
| GSZ |
| GMR |
| GMC |
| GMA |
| GML |

**■ XXY250-7-MC40-B42
XXY250-7-MC41-B42**

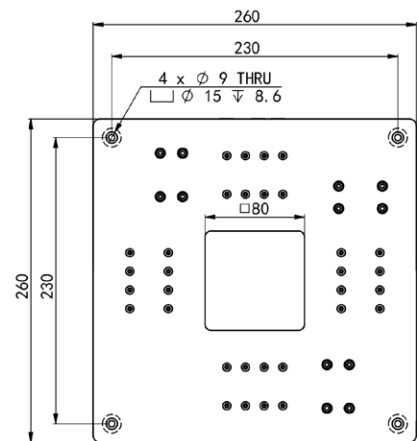
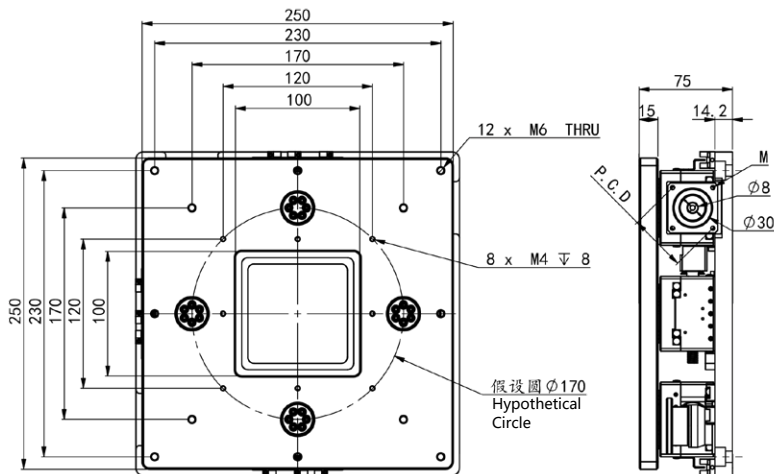


| |
|-----------|
| XXY |
| GXYR |
| GX |
| GZ |
| GTZ |
| GXY |
| GR |
| GYH |
| GSH |
| GSR |
| GSHR |
| GSA |
| GSN |
| GSB |
| GSG |
| Parameter |
| GSZ |
| GMR |
| GMC |
| GMA |
| GML |

**■ XXY250-7-MC40-S10C1
XXY250-7-MC40-S10C2
XXY250-7-MC41-S10C1
XXY250-7-MC41-S10C2**



S10C1: 100W Servo Motor Connector;
PCD45- ϕ 30- ϕ 8-M3
S10C2: 100W Servo Motor Connector;
PCD46- ϕ 30- ϕ 8-M4



■ XXY300 Series

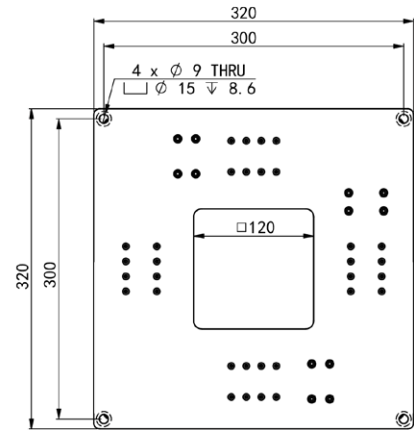
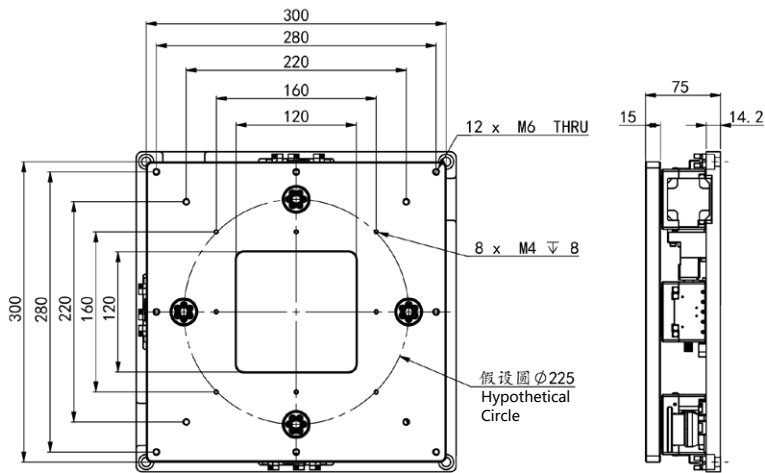
| XXY | 300 | - 7 - | M | C | 4 | 0 | - B42 |
|------------|------------|--------------|------------|------------|----------|--------------------|---|
| Series | Size | Stroke | Drive Type | Support | Rails | Brakes | Motor |
| 3 Axes | | ±7mm | Mid-drive | Cross Type | 4: 4 pcs | 0: None 1: 1 pc | B42: Dedicated 42 Stepper Motor S10C1: 100W Servo Motor Connector PCD45-Φ30-Φ8-M3 S10C2: 100W Servo Motor Connector PCD46-Φ30-Φ8-M4 |

■ XXY300 Technical Parameters

| Item | Model | XXY300-7-MC40-B42 XXY300-7-MC41-B42 | |
|------------------------|-------|--|----------------------------|
| | | XXY300-7-MC40-S10C1 XXY300-7-MC40-S10C2 XXY300-7-MC41-S10C1 XXY300-7-MC41-S10C2 | |
| Table Size | mm | 300×300 | |
| Base Size | mm | 320×320 | |
| Height | mm | 75 | |
| Stroke | mm | ±7 | |
| Repeatability | μm | 2 | |
| Movement | ° | ±3.5 | |
| Flatness | mm | ±0.02 | |
| Motor | | Dedicated 42 Stepper Motor | 100W Servo Motor Connector |
| Screw Lead | mm | 2 | |
| Suggested Dynamic Load | kg | 80 | |
| Satic Load | kg | 120 | |
| Surface Treatment | | Black Anodized | |
| Weight | kg | 9 | |

| |
|-----------|
| XXY |
| GXYR |
| GX |
| GZ |
| GTZ |
| GXY |
| GR |
| GYH |
| GSH |
| GSR |
| GSHR |
| GSA |
| GSN |
| GSB |
| GSG |
| Parameter |
| GSZ |
| GMR |
| GMC |
| GMA |
| GML |

**■ XXY300-7-MC40-B42
XXY300-7-MC41-B42**



**■ XXY300-7-MC40-S10C1
XXY300-7-MC40-S10C2
XXY300-7-MC41-S10C1
XXY300-7-MC41-S10C2**



S10C1: 100W Servo Motor Connector;
PCD45-φ30-φ8-M3
S10C2: 100W Servo Motor Connector;
PCD46-φ30-φ8-M4

