



Hollow Rotary Tables/GSR series

Cross Roller Bearing
Vertical & Suspension Installation Available



GSR Series

Large Aperture Structure

Easier wiring and piping ,especially in complicated wiring and piping condition

Right-angle Structure

Provide multiple choices for limited space effectively use the limited space

Diversified Combination

It can be combined with planetary reducer and servo motors of various brands to achieve diversified structural design

Cross-roller Inside

Side and suspension installation available

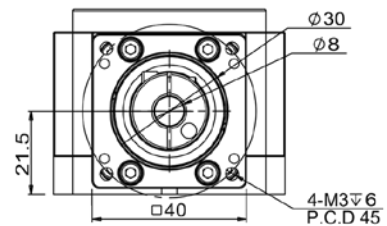
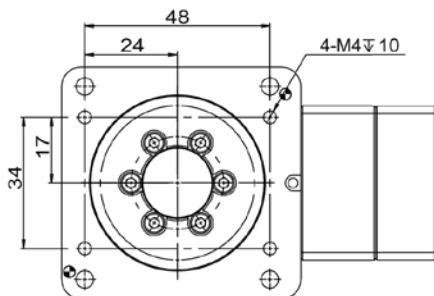
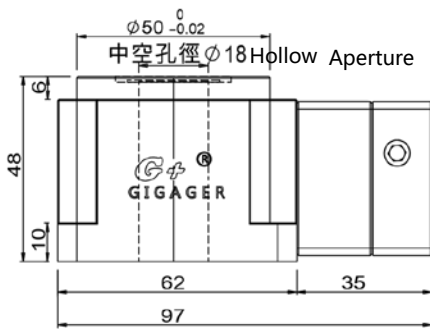
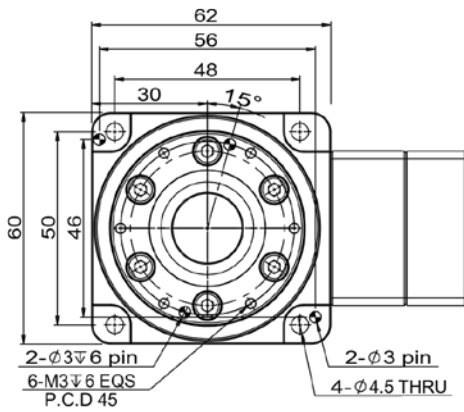
Long Life-span

The accuracy life can reach 30000hrs

GSR60

Series	Size	Type	Ratio	Motor
GSR	60		10K	SV1
	60 110 150 200	M: Planetary N: None		SV1: Servo Ø8 PCD45,M3 SV2: Servo Ø8 PCD46,M4 Suit for 100W Servo Motor
				ST1: Stepper Ø5 PCD43.8,M3 ST2: Stepper Ø6 PCD43.8,M4 Suit for 42 Stepper Motor

- XXY
- GXYR
- GX
- GZ
- GTZ
- GXY
- GR
- GYH
- GSH
- GSR**
- GSHR
- GSA
- GSN
- GSB
- GSG
- Parameter
- GSZ
- GMR
- GMC
- GMA
- GML

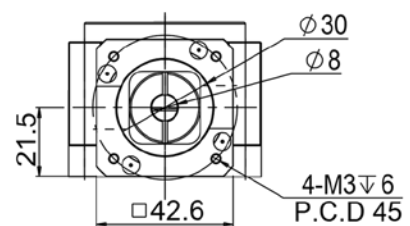
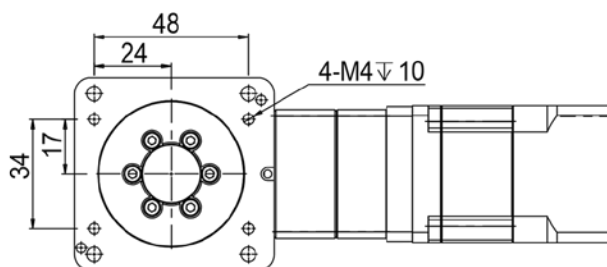
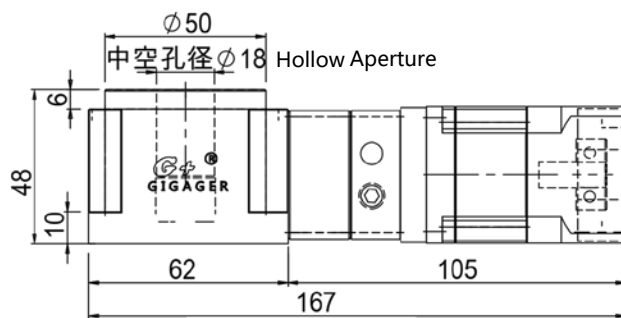
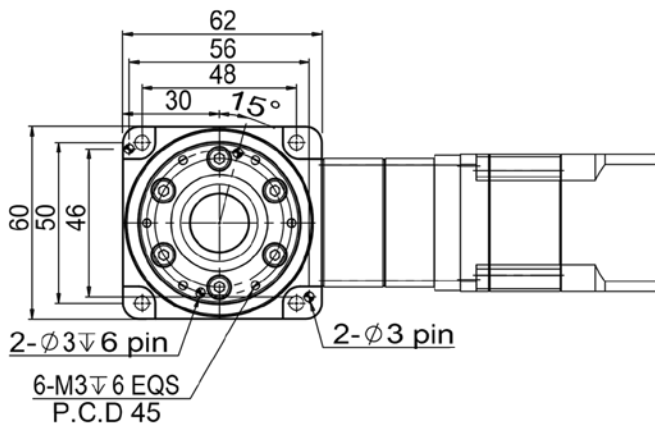


Technical Parameters

Bearing of Rotary Table	Cross Roller Bearing	
Allowable Torque	N.m	12
Allowable Moment of Inertia	N.m	5
Allowable Table Speed	rpm	200
Gear Ratio	i	10
Repeatability	arc-sec	≤ 10
Positioning Accuracy	arc-min	≤ 2
Allowable Axial Load	N	300
Table Flatness	mm	≤ 0.01
Table Concentricity	mm	≤ 0.01
Ingress Protection	IP	40
Weight	kg	0.9

GSR60M

Series	Size	Type	Ratio	Motor
GSR	60	M	30K	SV1
	60 110 150 200	M: Planetary N: None		SV1: Servo Ø8 PCD45,M3 SV2: Servo Ø8 PCD46,M4 Suit for 100W Servo Motor
				ST1: Stepper Ø5 PCD43.8,M3 ST2: Stepper Ø6 PCD43.8,M4 Suit for 42 Stepper Motor



Technical Parameters

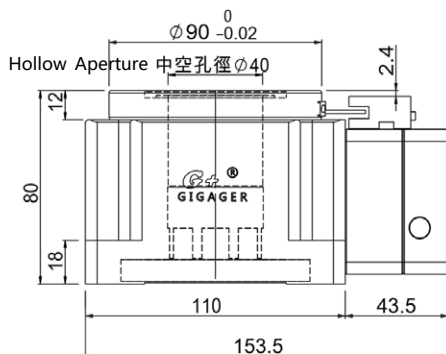
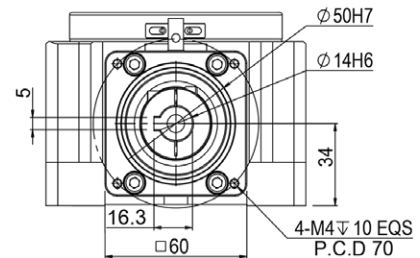
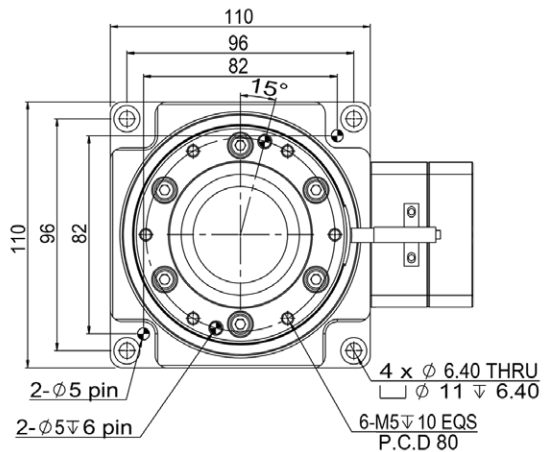
Bearing of Rotary Table		Cross Roller Bearing
Allowable Torque	N.m	12
Allowable Moment of Inertia	N.m	5
Allowable Table Speed	rpm	200
Gear Ratio	i	30/40/50
Repeatability	arc-sec	≤ 10
Positioning Accuracy	arc-min	≤ 2
Allowable Axial Load	N	300
Table Flatness	mm	≤ 0.01
Table Concentricity	mm	≤ 0.01
Ingress Protection	IP	40
Weight	kg	1.5

XXY
GXYR
GX
GZ
GTZ
GXY
GR
GYH
GSH
GSR
GSHR
GSA
GSN
GSB
GSG
Parameter
GSZ
GMR
GMC
GMA
GML

GSR110

Series	Size	Type	Ratio	Motor
GSR	110		10K	SV1
	60 110 150 200	M: Planetary N: None		SV1: Servo Ø14 PCD70,M4 SV2: Servo Ø14 PCD70,M5 SV3: Servo Ø11 PCD70,M4 Suit for 200~400W Servo Motor ST1: Stepper Ø6.35 PCD66.67,M4 ST2: Stepper Ø6.35 PCD70.7,M4 ST3: Stepper Ø8 PCD70.7,M4 ST4: Stepper Ø8 PCD66.67,M4 Suit for 57/60 Stepper Motor

- XXY
- GXYR
- GX
- GZ
- GTZ
- GXY
- GR
- GYH
- GSH
- GSR**
- GSHR
- GSA
- GSN
- GSB
- GSG
- Parameter
- GSZ
- GMR
- GMC
- GMA
- GML

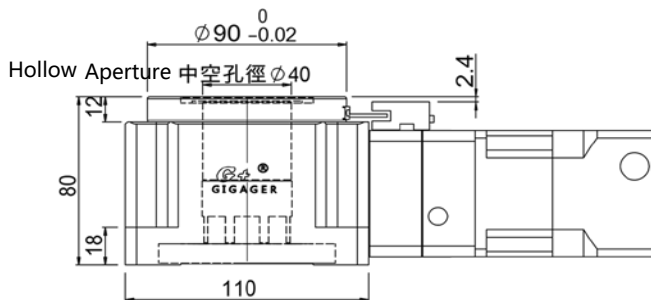
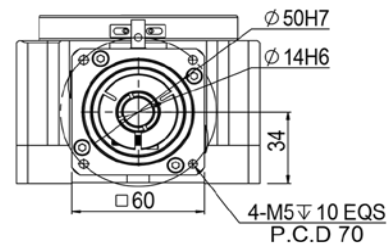
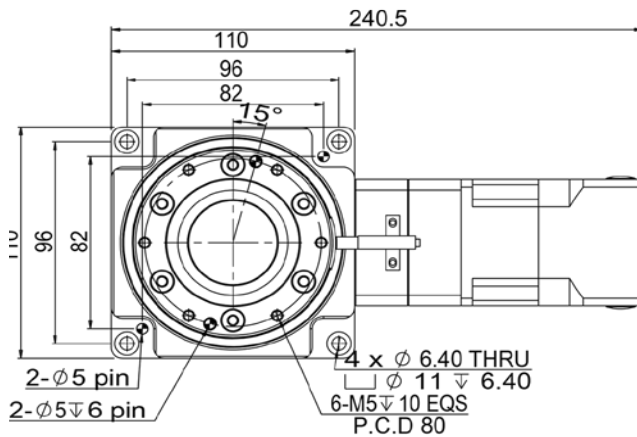


Technical Parameters

Bearing of Rotary Table		Cross Roller Bearing
Allowable Torque	N.m	45
Allowable Moment of Inertia	N.m	50
Allowable Table Speed	rpm	200
Gear Ratio	i	10
Repeatability	arc-sec	≤ 10
Positioning Accuracy	arc-min	≤ 2
Allowable Axial Load	N	1500
Table Flatness	mm	≤ 0.01
Table Concentricity	mm	≤ 0.01
Ingress Protection	IP	40
Weight	kg	3

GSR110M

Series	Size	Type	Ratio	Motor
GSR	110	M	30K	SV1
	60 110 150 200	M: Planetary N: None		SV1: Servo Ø14 PCD70,M4 SV2: Servo Ø14 PCD70,M5 SV3: Servo Ø11 PCD70,M4 Suit for 200~400W Servo Motor
				ST1: Stepper Ø6.35 PCD66.67,M4 ST2: Stepper Ø6.35 PCD70.7,M4 ST3: Stepper Ø8 PCD70.7,M4 ST4: Stepper Ø8 PCD66.67,M4 Suit for 57/60 Stepper Motor



Technical Parameters

Bearing of Rotary Table		Cross Roller Bearing
Allowable Torque	N.m	45
Allowable Moment of Inertia	N.m	50
Allowable Table Speed	rpm	200
Ratio	i	30/40/50/70/100
Repeatability	arc-sec	≤ 10
Positioning Accuracy	arc-min	≤ 2
Allowable Axial Load	N	1500
Table Flatness	mm	≤ 0.01
Table Concentricity	mm	≤ 0.01
Ingress Protection	IP	40
Weight	kg	4.3

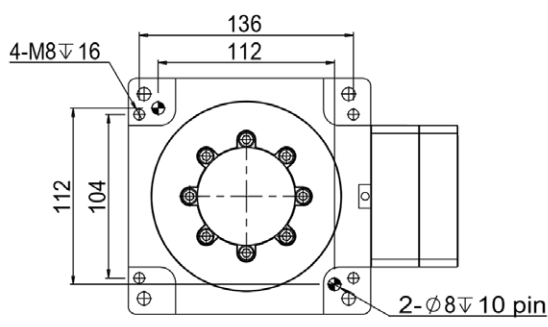
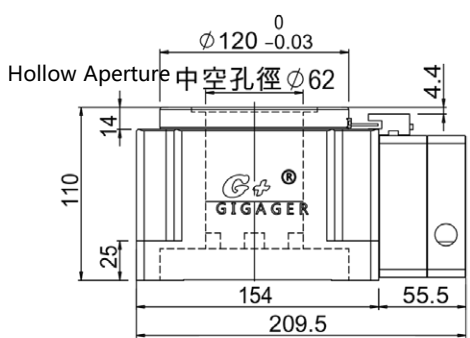
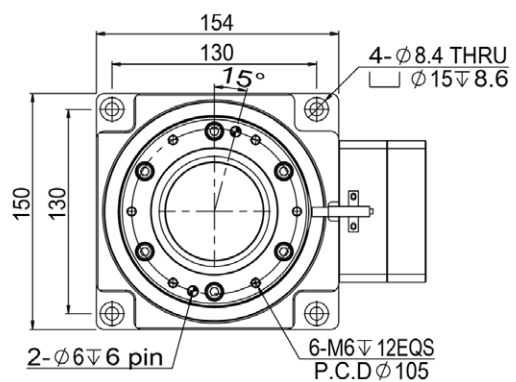
XXY
GXYR
GX
GZ
GTZ
GXY
GR
GYH
GSH
GSR
GSHR
GSA
GSN
GSB
GSG
Parameter
GSZ
GMR
GMC
GMA
GML

GSR150

Series	Size	Type	Ratio
GSR	150		10K
	60	M: Planetary N: None	
	110		
	150		
	200		

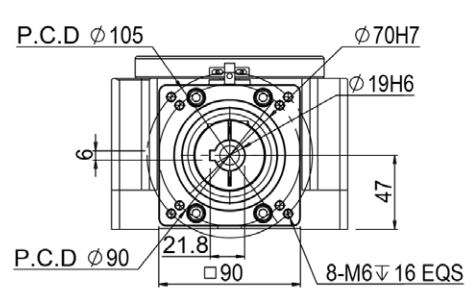
Motor
SV1
SV1: Servo Ø19 PCD90,M5 SV2: Servo Ø19 PCD90,M6 Suit for 750W AC Servo Motor
ST1: Stepper Ø14 PCD98.4,M5 ST2: Stepper Ø14 PCD98.4,M6 Suit for 86 Stepper Motor

- XXY
- GXYR
- GX
- GZ
- GTZ
- GXY
- GR
- GYH
- GSH
- GSR**
- GSHR
- GSA
- GSN
- GSB
- GSG
- Parameter
- GSZ
- GMR
- GMC
- GMA
- GML



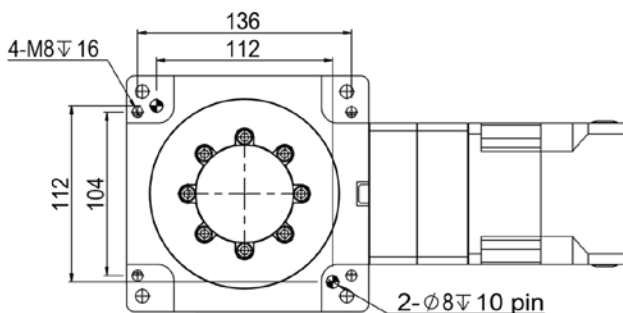
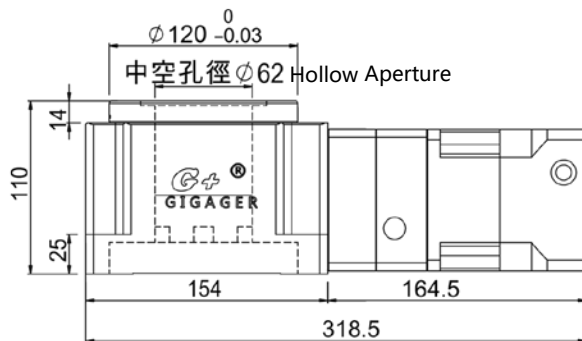
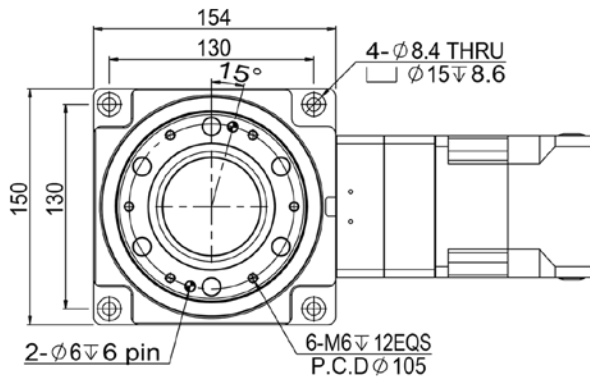
Technical Parameters

Bearing of Rotary Table	Cross Roller Bearing	
Allowable Torque	N.m	80
Allowable Moment of Inertia	N.m	90
Allowable Table Speed	rpm	200
Gear Ratio	i	10
Repeatability	arc-sec	≤ 10
Positioning Accuracy	arc-min	≤ 2
Allowable Axial Load	N	3500
Table Flatness	mm	≤ 0.01
Table Concentricity	mm	≤ 0.01
Ingress Protection	IP	40
Weight	kg	7.5



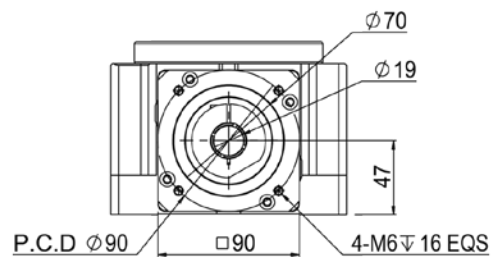
GSR150M

Series	Size	Type	Ratio	Motor
GSR	150	M	30K	SV1
	60 110 150 200	M: Planetary N: None		SV1: Servo Ø19 PCD90,M5 SV2: Servo Ø19 PCD90,M6 Suit for 750W AC Servo Motor
				ST1: Stepper Ø14 PCD98.4,M5 ST2: Stepper Ø14 PCD98.4,M6 Suit for 86 Stepper Motor



Technical Parameters

Bearing of Rotary Table		Cross Roller Bearing
Allowable Torque	N.m	80
Allowable Moment of Inertia	N.m	90
Allowable Table Speed	rpm	200
Gear Ratio	i	30/40/50/70/100
Repeatability	arc-sec	≤ 10
Positioning Accuracy	arc-min	≤ 2
Allowable Axial Load	N	3500
Table Flatness	mm	≤ 0.01
Table Concentricity	mm	≤ 0.01
Ingress Protection	IP	40
Weight	kg	12.1

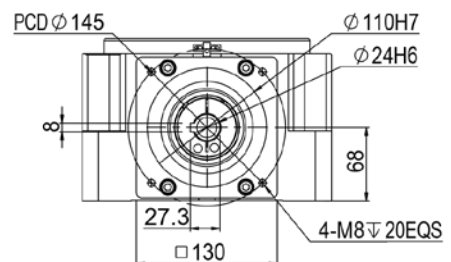
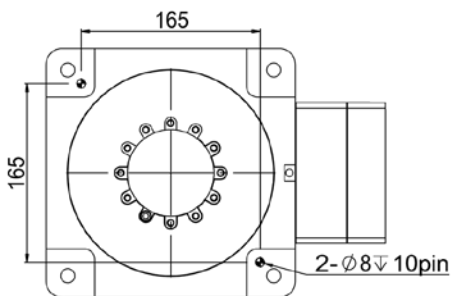
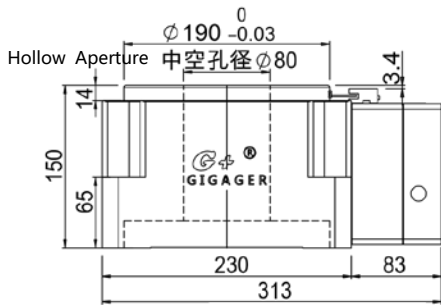
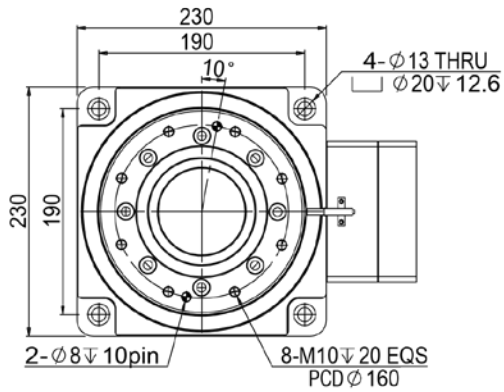


XXY
GXYR
GX
GZ
GTZ
GXY
GR
GYH
GSH
GSR
GSHR
GSA
GSN
GSB
GSG
Parameter
GSZ
GMR
GMC
GMA
GML

GSR200

Series	Size	Type	Ratio	Motor
GSR	200		10K	SV1
	60 110 150 200	M: Planetary N: None		SV1: Servo Ø22 PCD145,M8 SV2: Servo Ø24 PCD145,M8 Suit for 100W AC Servo Motor

- XXY
- GXYR
- GX
- GZ
- GTZ
- GXY
- GR
- GYP
- GSH
- GSR**
- GSHR
- GSA
- GSN
- GSB
- GSG
- Parameter
- GSZ
- GMR
- GMC
- GMA
- GML

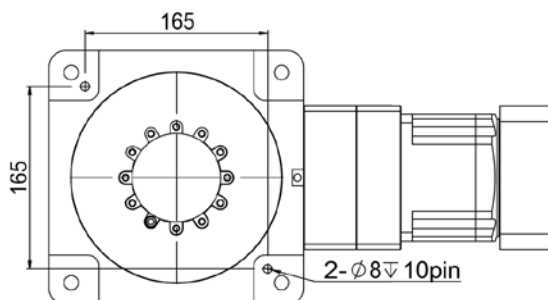
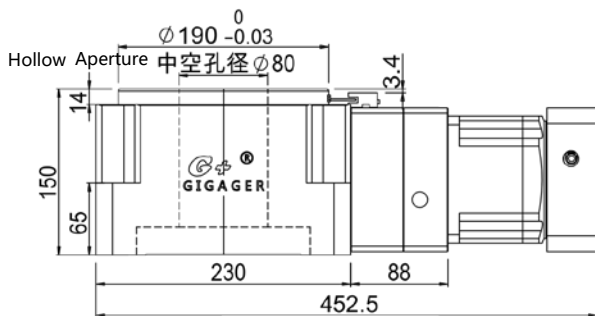
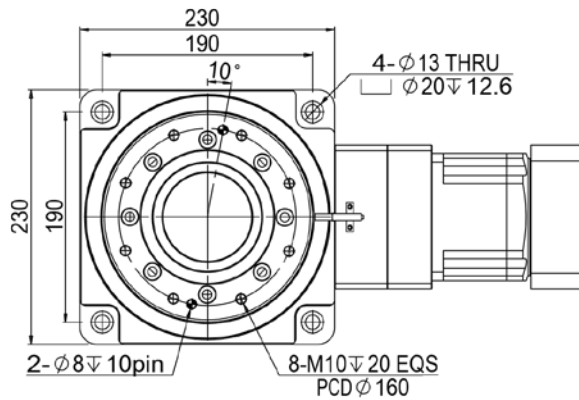


Technical Parameters

	Bearing of Rotary Table	Cross Roller Bearing
Allowable Torque	N.m	170
Allowable Moment of Inertia	N.m	200
Allowable Table Speed	rpm	200
Gear Ratio	i	10
Repeatability	arc-sec	≤ 10
Positioning Accuracy	arc-min	≤ 2
Allowable Axial Load	N	7000
Table Flatness	mm	≤ 0.01
Table Concentricity	mm	≤ 0.01
Ingress Protection	IP	53
Weight	kg	26

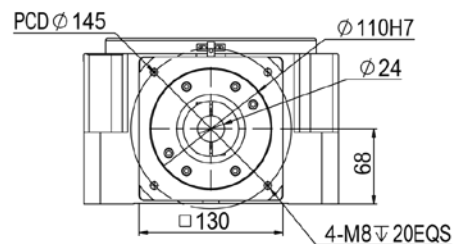
GSR200M

Series	Size	Type	Ratio	Motor
GSR	200	M	30K	SV1
	60 110 150 200	M: Planetary N: None		SV1: Servo Ø22 PCD145,M8 SV2: Servo Ø24 PCD145,M8 Suit for 100W AC Servo Motor



Technical Parameters

Bearing of Rotary Table	Cross Roller Bearing	
Allowable Torque	N.m	170
Allowable Moment of Inertia	N.m	200
Allowable Table Speed	rpm	200
Gear Ratio	i	30/40/50/70/100
Repeatability	arc-sec	≤ 15
Positioning Accuracy	arc-min	≤ 2
Allowable Axial Load	N	7000
Table Flatness	mm	≤ 0.01
Table Concentricity	mm	≤ 0.01
Ingress Protection	IP	53
Weight	kg	34



XXY
GXYR
GX
GZ
GTZ
GXY
GR
GYH
GSH
GSR
GSHR
GSA
GSN
GSB
GSG
Parameter
GSZ
GMR
GMC
GMA
GML